

XEROX®

CopyCentre®

WorkCentre®

C20

M20/M20i

Technology | Document Management | Consulting Services

copy | print | scan | fax | email

Power and Performance within reach



Office machines

with the drive to **succeed**

Meet the CopyCentre® C20 digital copier, WorkCentre® M20 and WorkCentre® M20i copier-printers: our newest business class machines. They perform basic office tasks with intelligence, and demonstrate a knack for high-level performance, day in and day out. The tools you need, at three feature-rich levels...all of which sit comfortably on a desktop.

Extremely simple to use

Intuitive, simple to operate and incredibly convenient. Start with straightforward copy features that are a breeze to use. And add the functionality of network printing, fax and scan-to-email capabilities.

- Walk-up easy copying
- Interface is easy to understand at a glance. Press a few buttons and your task is complete
- High-quality printing on a wide range of media
- Simple print drivers for fast installation and instant productivity (M20/M20i)
- Powerful faxing in color or black-and-white (M20i)
- Scan in color or black-and-white (M20/M20i)
- Simple scanning direct to PC through USB connection (M20/M20i)

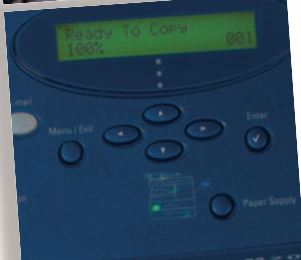
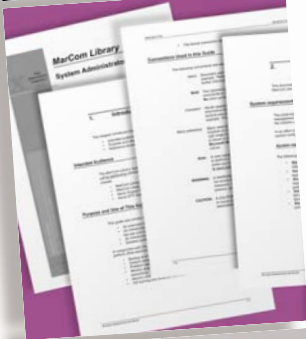
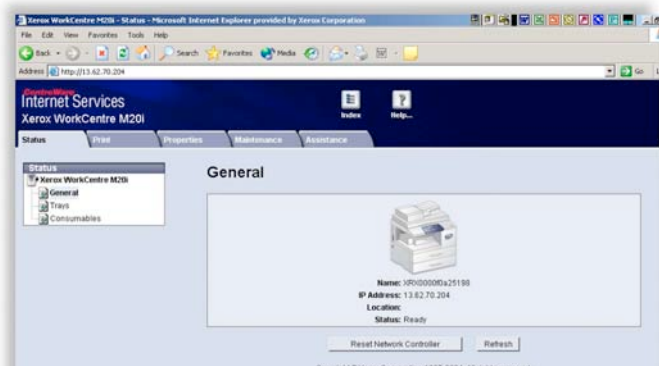
Extra smart design

Intelligent design and thoughtful feature set reduces the effort devoted to basic office tasks.

- Print directly from your network — or from the Internet (networked models*)
- Scan to email addresses with push button ease (networked models*)
- Optical Character Recognition (OCR) and Image Editing Software are included to convert scanned images into editable text documents (M20/M20i)
- Xerox ControlCentre™ 5.0 lets you monitor fax usage, enter phonebook data and more — right from your PC (M20i)
- Remote device management tools available to easily monitor, manage and control networked devices (networked models*)
- Optional Secure Print and Network Authentication Kit provides a higher level of document and network access security

*Networked models include the M20 with optional Network Accessory Kit or the M20i.

CentreWare IS gives your entire network access to WorkCentre M20i features.



The simple, intuitive design of C20 and M20/M20i control panels makes them easy to use. Many features are accessible with the touch of a single button.

Copy, fax and scan to email functions available through easy access buttons.

LCD panel shows job and machine status.

Separate button displays job status in LCD window.

Alpha-numeric keypad supports fax features.



Convenient keyboard for scanning to email.

Frequently used features such as collate, reduce/enlarge, lighten/darken are controlled by separate buttons.

Select two-sided copying with just one button push.

Device status display shows whether the system is ready or needs attention.

Image shown is the M20i control panel

Excellent performance

CopyCentre C20 copier and WorkCentre M20 and WorkCentre M20i copier-printers come packed with a full range of high-performance features you won't find on other office machines in this class:

- Up to 22 ppm (Letter) speeds
- Automatic two-sided printing and copying saves paper and produces more professional looking documents
- Ultra-fast 33.6 Kbps fax transmission with 16MB of fax memory (M20i)
- Scan-once-print-many reliability and productivity
- Electronic collation saves time by eliminating manual sorting

- 100-sheet bypass tray supports envelopes, transparencies and special media
- Optional second paper tray increases capacity to 1,200-sheets



WorkCentre M20i

Rock-solid reliability.

The Xerox name is synonymous with quality, innovation and service. It also means day-in, day-out reliability. CopyCentre C20 copiers and WorkCentre M20/M20i copier-printers are extremely durable, designed and built to perform flawlessly in today's high-speed, high-pressure workgroup settings.

Security

With WorkCentre M20/M20i, you stay in control. The M20/M20i offers device or optional network access protection that's safe and flexible.

Optional Secure Print enables users to control when confidential documents are printed. The M20i also includes a secure fax mode, so sensitive information prints out only when you want it to.



Call today. For US and Canada product information, call **1-877-362-6567**. To speak to a US Sales Representative, call **1-800-ASK-XEROX**. Or visit us at www.xerox.com/office

CopyCentre® C20 / WorkCentre® M20 / M20i



Second Paper tray Option



Cabinet Stand Option

SPECIFICATIONS

Copying

Speed: 22 copies per min. (letter);
21 copies per min. (A4)
Resolution: 600 x 600 dpi
First Copy Out: < 8 seconds
Full Duplex: Yes (1-2, 2-2, 2-1)

Reduce/Enlarge

Platen: 25 – 400% in 1% increments
DADF: 25 – 100% in 1% increments
Productivity: Scan Once Print Many,
Electronic Pre-Collation standard
Multiple Copies: Up to 999 copies of
multiple page originals

Printing (M20, M20i)

Technology: Laser monochrome
Speed: 22 ppm Letter; 21 ppm A4
Resolution: 600 x 600 dpi;
1200 x 1200 dpi interpolated
First Print Out: < 9 seconds
Two-Sided: Yes

Secure Print: Optional
Page Description Language (PDL): PCL6
emulation Standard; PostScript 3 printing
support (Network products)
Print Drivers: Windows 98/NT4.0/2000/Me/XP,
Mac OS

Interfaces: USB 2.0 standard on M20 and M20i
(USB cable included); Parallel Port, IEEE 1284,
10/100BaseT Ethernet standard on M20i,
optional on M20

Scan (M20, M20i)

Compatibility: TWAIN standard
Technology: Direct Connect to PC (USB);
Parallel Port, IEEE 1284
Scan Resolution:
Optical Resolution: 600 x 600 dpi
Interpolated Resolution: 4800 dpi
Pre-scan: 75 dpi

CONFIGURATIONS	CopyCentre® C20	WorkCentre® M20	WorkCentre® M20i
Speed	Up to 22 ppm		
Duty Cycle	Up to 20,000 pages per month		
Paper Handling	550-sheet Standard Tray, 100-sheet Bypass Tray		
Paper input	550-sheet Feeder		
Paper output	250-sheet Output Tray		
Automatic 2-sided	Standard		
Copy	As fast as 8 seconds		
First copy out time	600 x 600 dpi		
Resolution	600 x 600 dpi		
Print	600 x 600 dpi, 1200 x 1200 dpi interpolated		
Resolution	NA	600 x 600 dpi, 1200 x 1200 dpi interpolated	
Processor	NA	32-bit RISC processor with video controller functionality	
Connectivity	NA	USB 2.0, Parallel	USB 2.0, Parallel, 10/100 BaseT Ethernet
Optional accessories	Optional Network Accessory Kit		
	Optional Secure Print and Network Authentication Kit ¹		
Scan	600 x 600 dpi, 4800 dpi interpolated		
Resolution	NA	600 x 600 dpi, 4800 dpi interpolated	
Scan-to-email	NA	Optional	Standard
Fax	33.6 Kbps		
Speed	NA	NA	33.6 Kbps
Resolution	NA	NA	Presets up to 400 x 400 dpi

Depth:
Monochrome: 1 bit
Text and Halftone: 20 bit
Color: 60 bit
Scan Driver: TWAIN Standard
Bundled OCR Software: PaperPort SE 9.0,
OmniPage SE v2.0

Faxing (M20i)

Transmission Speed: 3 seconds per page
Communication Mode: Half Duplex
Modem Speed: 33.6 Kbps
Data Compression: JBIG, MMR/MR/MH
(JPEG for color fax transmission)
Resolution: Pre-sets up to 400 x 400 dpi
Fax Memory: 16 MB
Dialing
Speed Dials Up to 200 locations
Group Dials Up to 199 supported
Fax Features
Halftones: 256 levels
Color Fax Tx/Rec: Yes/No
Secure Fax: Receive Mode, secure mailbox
Battery Backup: Up to 100 hours when fully charged

Email (M20i, Optional M20)

Scan to SMTP addresses
Local user access and authentication
Device network access and authentication
Guest mode access is available
Network address list search via LDAP

Optional Accessories

Network Accessory Kit (M20) (customer installable)
Adds 32MB Memory, Ethernet NIC, PostScript® 3
printing support, Email Keyboard, and applicable
software and documentation

Secure Print and Network Authentication Kit¹
(M20/M20i) (customer installable) adds 128 MB
and applicable software. Enables Secure Print
and Network Authentication for Scan-to-email
via SMB or Kerberos
Second Paper Tray
Cabinet Stand
Foreign Device Interface (Service Install)

Media Handling

Input Paper Capacity
Standard Tray: 550 sheets, optional second tray
(550 sheets)
Bypass Tray: 100 sheets
Auto Tray Switching Capable

Paper Size

Minimum: 5 x 7 in. / 127 x 176 mm
Maximum: 8.5 x 14 in. / 216 x 356 mm

Paper Weight

Standard Tray: 16 – 24 lb / 60 – 90 gsm
Bypass Tray: 16 – 43 lb / 60 – 163 gsm
Document Handler: 50 sheets
Output Tray Capacity: 250 sheets
Media Types: Paper, envelopes, labels, transparencies

Physical Dimensions (WxDxH)

Unit: 21.3 x 17.4 x 19.2 in. / 540 x 441 x 488 mm,
Weight: 58 lbs / 26 kg
Unit with Second Paper Tray Option:
21.3 x 17.4 x 24.4 in. / 540 x 441 x 619 mm,
Weight: 67 lbs / 30 kg
Cabinet Stand Option: 21.3 x 23.4 x 22 in. /
540 x 594 x 560 mm

Electrical

Power Switch: Yes
Power: 110 VAC, 50/60 Hz or 220 VAC, 50/60 Hz
Power Consumption:
Average: 450 watts
Power Saver Mode: 35 watts
Energy Saver: ENERGY STAR® Compliant

Operating Environment

Temperature

Maximum Range 50° – 89.6°F/10° – 32°C
Recommended Range 60.8° – 86°F/16° – 30°C

Humidity

Maximum Range 20 – 80%
Recommended Range 30 – 70%
Device Memory: C20: 32 MB, M20: 32 MB,
M20 (with Network Accessory Kit): 64 MB,
M20i: 80 MB
Device Management: ControlCentre™ 5.0,
CentreWare Internet Services, CentreWare Web,
CentreWare DP, NDP5 and HP Openview
(Networked Products)

Supplies

Approximate Yields

Toner Customer Replaceable Unit (CRU) –
Starter kit: 4,000 images*; Replacement kit:
8,000 images
Drum Cartridge Customer Replaceable Unit
(CRU) – 20,000 images*

*Capacities are approximate, based on 5% coverage
on a letter/A4-sized page. Declared yield values in
accordance with ISO19572.

Agency Approvals

Safety: UL Safety
CSA Safety



¹ Optional Secure Print and Network Authentication Kit is only available for networked models. (Networked models include the M20 with optional Network Accessory Kit or the M20i).