

LANIER

SP C222SF



DESKTOP COLOR LASER MFP

High-quality color, exceptional convenience

With this latest desktop color laser MFP series you can now enjoy the speed, versatility and productivity of a color laser multifunctional printer that is specifically engineered to meet the needs of small offices and workgroups



Bring Multifunctional Color To The Desktop

No matter what tasks you handle on a daily basis, the Lanier® SP C222SF Series can help you accelerate workflow, accomplish a wider range of jobs and energize documents with vibrant business color. These desktop color laser multifunction printers (MFPs) offer powerful, four-in-one performance enhanced with capabilities normally reserved for much more expensive systems. They also deliver proven Lanier technology in a convenient, compact design. Plus, these smart, sleek systems are simple to operate, easy to maintain and highly affordable to own.

Outstanding Efficiency and Quality

Small offices, small workgroups and single-user environments can expect the Lanier SP C222SF Series to provide fast results for a wide range of jobs, and bold color output that easily exceeds the quality of inkjet.

- Deliver every document quickly to maximize productivity. These systems print and copy full-color and black & white documents at the exact same rate: 21 pages-per-minute (SP C221SF and SP C222SF) or 16 pages-per-minute (SP C220S).
- Print proposals, reports, Web content and other documents in sharp black & white or vivid color. All three MFPs offer resolutions up to 2400 x 600 dpi.
- Take your documents beyond the limits of inkjet. Laser-quality printing and copying ensure fast, consistent results on plain paper without unsightly smearing.
- Share hardcopy documents easily or start building an archive with full-color and black & white scanning. Scan documents with resolutions up to 1200 x 1200 dpi, or convert scanned files to editable text.
- Send critical documents to customers, colleagues and other business partners with speed and convenience via Group 3 faxing*, including 20 One-Touch numbers.
- Reduce wait time for all your printing and copying. First print speed is 14 seconds for either black & white or color, and first copy time from the Automatic Document Feeder* is just 30 seconds.



Streamline your workflow and handle virtually any document task with the fast, cost-effective Lanier SP C222SF Series.



An intuitive control panel makes it easy to find exactly what you need.

Simple, Intuitive Operation

The Lanier SP C222SF Series features a user-friendly design that makes it easy for small office users to complete jobs efficiently and move on to more critical work.

- Replace supplies quickly with All-in-One Cartridges that simplify inventory and storage. They have a no-mess design that allows for one-handed replacement.
- Achieve peak productivity faster. These compact MFPs are easy to set up and simple to maintain, even for novice users.
- Locate these small-footprint MFPs in remote offices, on a reception desk, in an executive suite, inside a kiosk or in other space-restricted environments.
- Manage your MFP remotely to save time and effort. Status Image Monitor software lets you check supply levels and change settings via the Web.

Unprecedented Capabilities

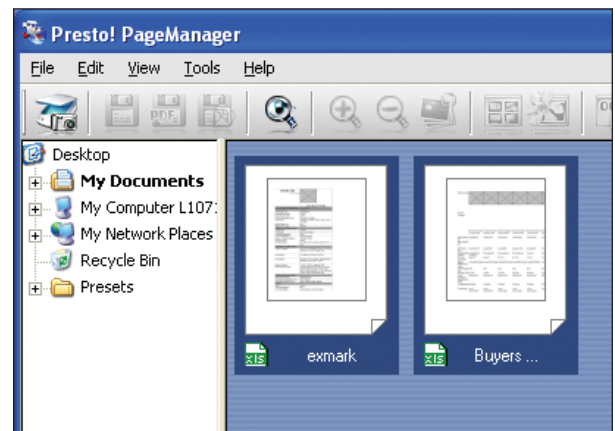
These MFPs make it truly affordable for small businesses and workgroups to take advantage of the same special features as much larger organizations.

- Reduce paper usage and supply costs with standard automatic duplex printing*.
- Distribute documents instantly with robust, easy-to-use Scan-To technology. Scan-To-Email does not require a dedicated server or additional software. Upload files to a shared server with Scan-To-FTP or to a local server with Scan-To-Folder.
- Minimize interruptions due to reloading paper with a maximum paper capacity of 751 sheets*.
- Improve document workflow with the PageManager utility, an easy-to-use application that enables automated file management, OCR scanning and other time-saving functions.

*SP C221SF and SP C222SF only.



Use the Automatic Document Feeder to accelerate scanning, copying and faxing* tasks.*



Streamline document management with the versatile, built-in PageManager utility.

Your Environmental Partner



Lanier continues its long-standing commitment to developing office solutions with environmentally friendly and superior energy- and supply-saving features, without compromising productivity, including:

- Quick Start-Up (QSU) Technology
- Power-Saving Sleep Mode
- Combine Copy Mode
- Low Noise Levels
- Minimal Ozone Emissions
- Restriction of Hazardous Substances (RoHS) Compliant

LANIER**SP C222SF Series****SPECIFICATIONS****ENGINE SPECIFICATIONS**

| | |
|--------------------------------------|--|
| Configuration: | Desktop |
| Technology: | Reading element: Flatbed with CCD array image-sensor Printing Processing: Laser beam scanning and electrophotographic printing with mono component toner development, 4 drums tandem method |
| Print Resolution: | 600 x 600 dpi (Speed Mode), 1200 x 600 dpi (Standard Mode), 2400 x 600 dpi (Fine Mode) |
| Output Speed (Letter): | SP C220S: 16 pages-per-minute in B&W and full-color SP C221SF / SP C222SF: 21 pages-per-minute in B&W and full-color |
| First Print Speed: | 14 seconds or less |
| Warm-Up Time: | 51 seconds or less |
| Copy Resolution: | 600 x 600 dpi (Flatbed), 600 x 300 dpi (ADF) |
| Platen Glass: | Original Type: Sheet/Book/3D objects |
| Document Feeding: | Standard 35-Sheet Automatic Document Feeder* Paper Size: 5.5" x 8.5" x 14" x 14" Paper Weight: 14 – 28 lb. (52 – 105 g/m ²) |
| Standard Paper Capacity: | 250-Sheet Tray, 1-Sheet Bypass Tray |
| Optional Paper Tray: | SP C221SF / SP C222SF: 500-Sheet Paper Feed Unit |
| Maximum Input Paper Capacity: | SP C220S: 250 sheets + 1-Sheet Bypass Tray Total: 251 sheets SP C221SF / SP C222SF: 250 sheets + 1-Sheet Bypass Tray + 500-Sheet Paper Feed Unit Total: 751 sheets |
| Output Capacity: | 150 sheets (face down) |
| Automatic Duplex Printing: | Standard* |
| Paper Sizes: | Standard Tray: Letter (8.5" x 11"), A4 (8.3" x 11.7"), EXE (7.25" x 10.5"), B5 (6.9" x 9.8"), Legal (8.5" x 14"), Custom (Width 3.6" – 8.5", Length 5.8" – 14.24") Optional Paper Feed Unit*: Letter (8.5" x 11"), A4 (8.3" x 11.7") Bypass Tray: Letter (8.5" x 11"), EXE (7.25" x 10.5"), B5 (6.9" x 9.8"), Legal (8.5" x 14") |
| Paper Weight: | Standard Tray and Bypass Tray: 16 – 40 lb. Bond / 83 lb. Index (60 – 160 g/m ²) Optional Paper Feed Unit: 16 – 28 lb. Bond (60 – 105 g/m ²) |
| Acceptable Paper Types: | Standard Tray and Bypass Tray: Plain Paper, Recycled Paper, Envelopes, Glossy Paper, Thick Paper & Labels Optional Paper Feed Unit: Plain Paper, Recycled Paper |
| Dimensions (W x D x H): | SP C220S: 16.54" x 19.41" x 17.28" (420 x 493 x 439 mm) SP C221SF / SP C222SF: 16.54" x 19.41" x 18.74" (420 x 493 x 476 mm) |

| | |
|-----------------------------------|---|
| Weight: | SP C220S: 61.6 lbs (28 kg or less) SP C221SF / SP C222SF: 66.14 lbs. (30 kg or less) 120 V, 60Hz |
| Power Requirements: | |
| Maximum Power Consumption: | 1,300W or less |
| Energy Saver Mode: | 20W-SP C220S & SP C221SF and 25W-SP C222SF |
| Safety Regulations: | UL60950-1 First Edition, CSA-22.2 No. 60950-1-03 First Edition, Energy Star: Color Multifunction Printer – Tier 1 |

PRINT CONTROLLER SPECIFICATIONS

| | |
|--|--|
| CPU: | 400MHz |
| Printer Languages: | SP C220S / SP C221SF: DDST (GDI) SP C222SF: PCL5c/6, PostScript 3 emulation SP C222SF: PCL/PS3: 80 fonts SP C220S / SP C221SF: 128 MB RAM standard/maximum SP C222SF: 256 MB RAM standard, 512 MB RAM maximum shared |
| Fonts: | SP C220S / SP C221SF: 128 MB RAM standard/maximum |
| Memory: | SP C222SF: 256 MB RAM standard, 512 MB RAM maximum shared |
| Standard Interface: | USB 2.0, Ethernet 10/100Base-TX |
| Optional Interface*: | SP C220S / SP C221SF/ SP C222SF IEEE 802.11b/g Wireless Bridge SX 2500CG |
| *Please note the Wireless Bridge Option and 10/100Base-TX cannot operate simultaneously. | |
| Network Protocols: | TCP/IP, IPP |
| Operating Systems: | Windows 2000/XP/Server 2003/Vista; Mac OS X v.10.2.8 – 10.4 DDST: Windows 2000/XP/Server 2003/Vista Mac OS X v.10.2+, Citrix Server PCL 5c/6: Windows 2000/XP/Server 2003/Vista; Mac OS X v.10.2+, Citrix Server PostScript 3: Windows 2000/XP/Server 2003/Vista; Mac OS X v.10.2+, Citrix Server Status Image Monitor |
| Drivers: | |
| Software: | |

MEMORY OPTIONS

| | |
|-------------------------------|------------------|
| 256 MB RAM Memory Unit | |
| Unit Type F | Order# 003310MIU |
| (SP C222SF only): | |

COPIER SPECIFICATIONS

| | |
|--|---|
| First Copy Speed: | 30 seconds (for both B&W and full-color) |
| Single Document Multiple Copy: | SP C220S: 16 copies-per-minute in B&W and full-color SP C221SF / SP C222SF: 21 copies-per-minute in B&W and full-color |
| Multiple Page Document Single Copy: | SP C221SF / SP C222SF: 20 copies-per-minute in B&W and 10 copies-per-minute in full-color 1 – 99 |
| Quantity Indicator: | |
| Reduction / Zoom Ratios: | 50, 65, 78, 93, 129, 155, 200, 400% / 25 - 400% in 1% steps Image Density Adjustment, Copy Mode (Text / Photo / Mixed), Memory Copy, Combine Copy (2-in-1, 4-in-1; ADF Only) |
| Copier Features: | |

SCANNER SPECIFICATIONS

| | |
|-------------------------------|--|
| Scanning Modes: | Full-color and 256-level grayscale TWAIN scanning |
| Scanning Resolution: | Scanner: 1200 x 1200 dpi With Driver: Max. 19200 x 19200 dpi (interpolated) |
| Scanning Speed: | B&W: Less than 5 seconds a page Full-color: Less than 10 seconds a page |
| Scan Area: | Via Platen: Max. width: 8.5" (216 mm), max. length: 11.7" (297 mm) Via ADF*: Width: 5.5" – 8.5" (139.7 – 215.9 mm), Length: 5.7" – 14" (139.7 – 355.6 mm) |
| Utilities and Drivers: | TWAIN Driver, Scanner utility (PageManager) |
| Protocol Support: | TCPIP, SMB |
| Scanning Features: | TWAIN /WIA, Scan-To-Email, Scan-To-Folder, Scan-To-FTP |

FACSIMILE* SPECIFICATIONS

| | |
|--------------------------------|---|
| Circuit: | PSTN and PABX |
| Compatibility: | ITU-T Group 3 (V.34) |
| Resolution: | Standard: 200 x 100 dpi Fine/photo: 200 x 200 dpi |
| Compression Method: | MH/MR/MMR |
| Scanning Speed: | Less than 5 seconds a page-per-minute |
| Modem Speed: | 33.6 Kbps with automatic fallback |
| Transmission Speed: | G3: 3 seconds-per-page |
| Memory: | Up to 100 pages |
| One-Touch / Speed Dial: | 20 One-Touch / 50 Speed Dial |
| Fax Features: | Broadcasting (100 locations), Automatic Redial (after 5 minutes), Auto Answer, Memory Transmission, Time Indicator, Error Correction Mode, & Automatic/Manual/ Substitute Reception |

HARDWARE ACCESSORIES

| | |
|------------------------------|--|
| Paper Feed Unit Type* | |
| TK1010: | Order# 406019 Paper Size: Letter (8.5" x 11"), A4 (8.3" x 11.7") Paper Weight: 16 – 28 lb. Bond (60 – 105 g/m ²) Capacity: 500 sheets |

CONSUMABLES**

| | |
|-------------------------------------|---------------------------|
| Black All-in-One Cartridge | |
| SP C220A: | 2,000 pages @ 5% coverage |
| Yellow All-in-One Cartridge | |
| SP C220A: | 2,000 pages @ 5% coverage |
| Magenta All-in-One Cartridge | |
| SP C220A: | 2,000 pages @ 5% coverage |
| Cyan All-in-One Cartridge | |
| SP C220A: | 2,000 pages @ 5% coverage |
| Waste Toner Bottle: | 25,000 pages |

*SP C221SF and SP C222SF only.

**The SP C220S, SP C221SF and SP C222SF ship with starter All-in-One Cartridges that yield 1,000 pages. All other consumables ship at full yield. All-in-One Cartridge yields based on 5% coverage and 24 pages per job.

For maximum performance and yield, we recommend using genuine Lanier parts and supplies.

www.lanier.com

Lanier Five Dedrick Place, West Caldwell, NJ 07006

©2008 Lanier is a registered trademark of Ricoh Americas Corporation. All rights reserved. Windows® and Windows 2000/XP/Server 2003/Vista are registered trademarks of Microsoft Corporation. Macintosh® is a registered trademark of Apple Computer, Inc. PCL is a registered trademark of Hewlett-Packard Company. All other trademarks are the property of their respective owners. Print speed may be affected by network, application or PC performance. Specifications and external appearances are subject to change without notice. Products are shown with optional features.

Printed in U.S.A. on recycled paper.



L2678